

RWP ANALYTICS®

Collect

Visualize

Analyze

Control

Management / Technical Planning and Control System

✓ *More controlability*

✓ *Lower scrap & cost*

✓ *Better decision*



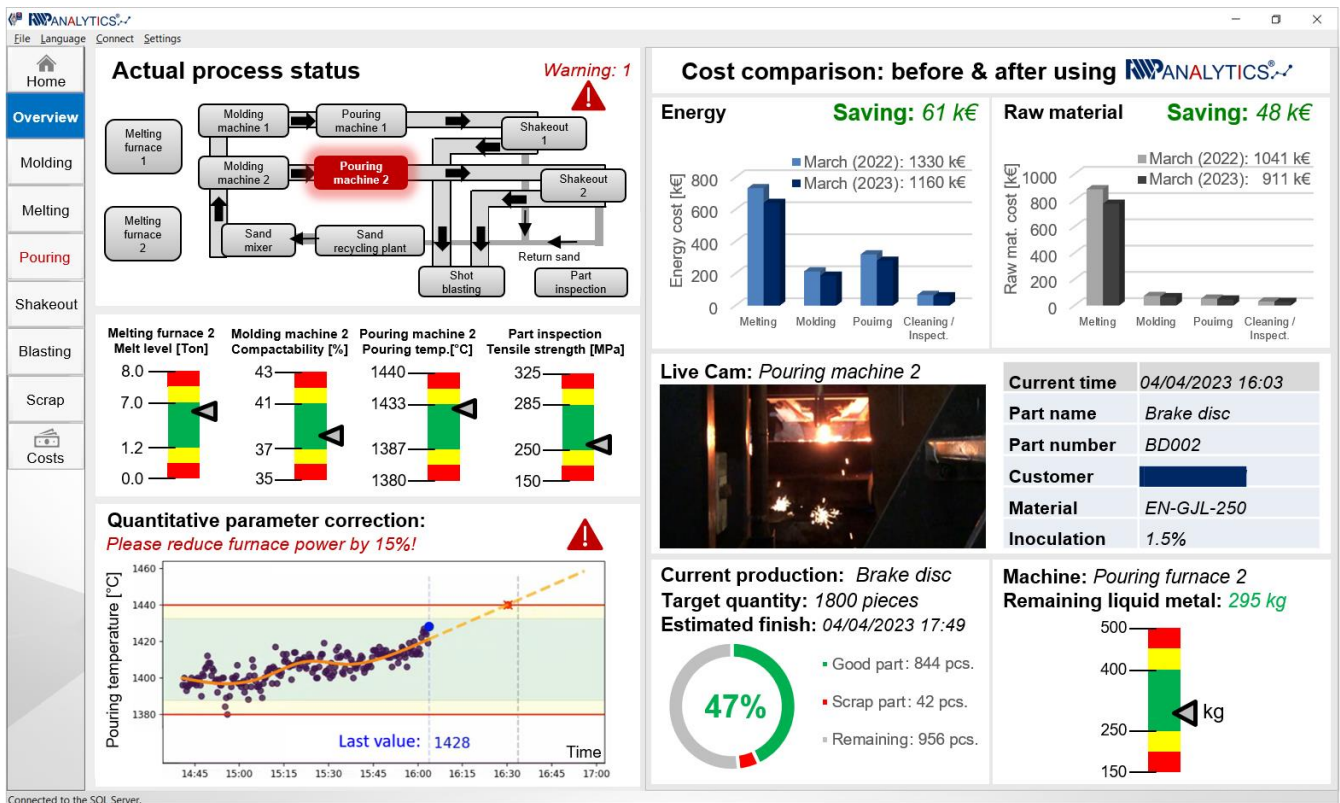
*Keep your production
on track with AI*

From sensor installation... ...to online monitoring, analysis and control



We help you implement your digital process for better cost-efficient management and more stable process

- ✓ Sensor and database installation
- ✓ Online customized monitoring with trend prediction
- ✓ Data analysis and process modelling service
- ✓ Implementation of process control (manual & automatic)



About the software

RWP Analytics is a management / technical planning and control system for production companies, developed by RWP GmbH, Germany. The aim of the software is to help production companies raise controllability, reduce rejection rate and better decision using Industry 4.0, digitalization and AI. By connecting company database with the tool, production manager can monitor entire process directly from workplace and get early informed about summarized management information, actual process fault and corresponding correction measures.

Who should use RWP Analytics?

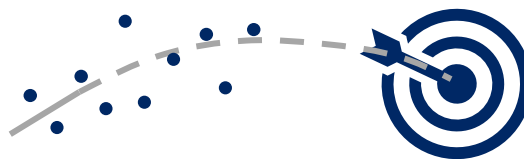
Production companies at all sizes or those who aim to:

- ✓ Implement a digital process
- ✓ See all management information at a glance (e.g. costs of energy, raw material, etc)
- ✓ Monitor process parameters in real time
- ✓ Get early notification of process error/defect
- ✓ Get informed about handling- and fault correction measures
- ✓ Identify critical process parameters
- ✓ Get suggestions of process handling and decision support
- ✓ Reduce scrap rate and production costs

Main features of RWP Analytics



Online monitoring



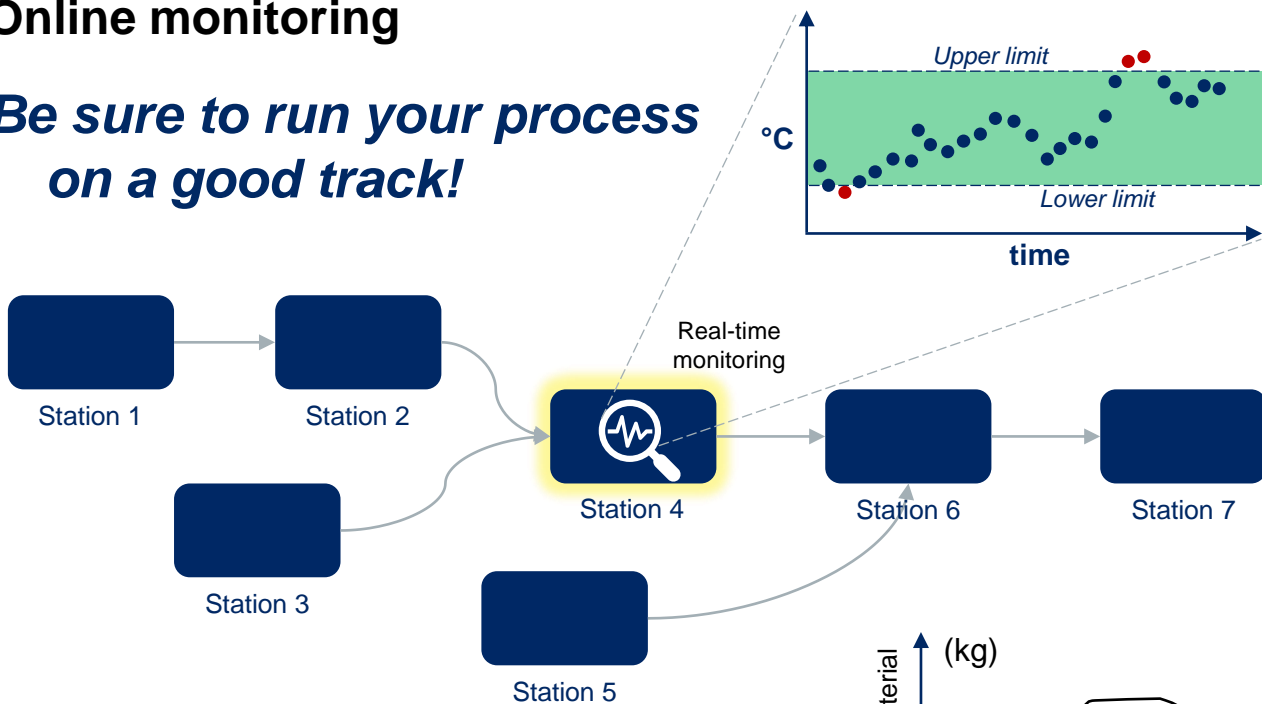
Trend prediction



Look back analysis & Control

Online monitoring

Be sure to run your process on a good track!



RWP Analytics delivers online monitoring of different process parameters by visualizing data from company's database. This means you can have a quick overview of the entire process in real time right at your workplace. The monitoring interface can be designed and customized as you wish.

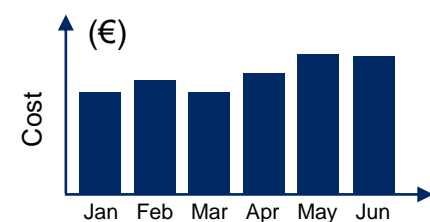
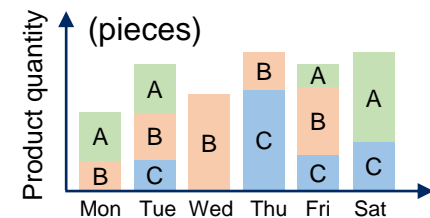
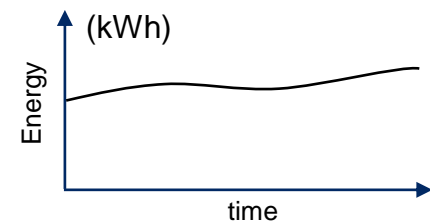
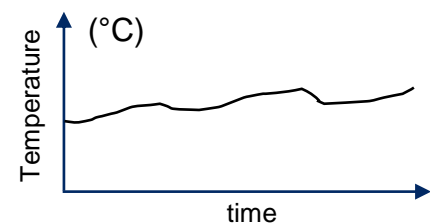
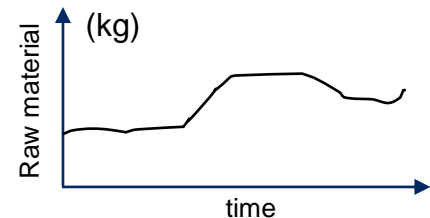
Monitoring of management and technical information can be easily created. This alone already helps you keep your process on a good track. Moreover, seeing how parameters behave (sensitivity) allows you to define a good process control strategy in order to avoid process failure.

RWP Analytics offers real-time monitoring of:

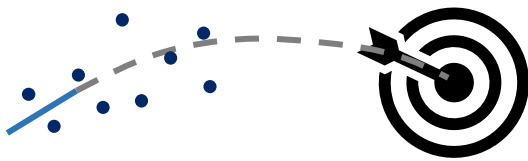
- ✓ Production cost
- ✓ Sensor / machine data
- ✓ Raw material use
- ✓ Energy consumption

Your benefits

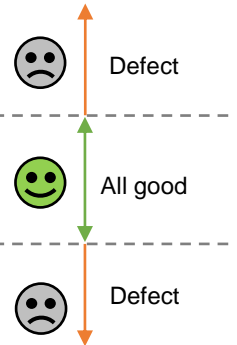
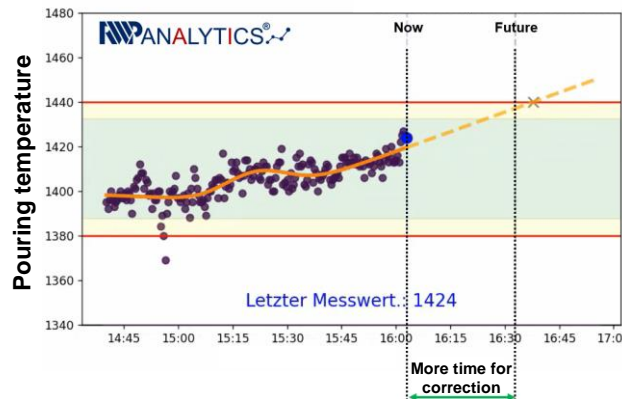
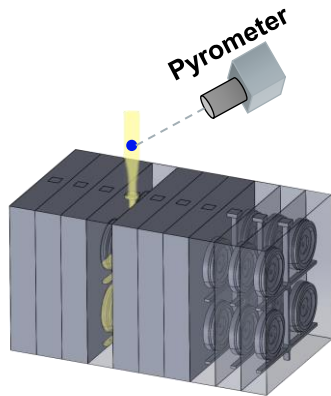
- ✓ Better cost management and saving with instant overview of important data with few clicks (no more hard work on excel sheets)
- ✓ You are early notified, when things are not on track



Trend prediction



*Always one step ahead
of possible mistakes!*



Unlike conventional monitoring tool, RWP Analytics offer process monitoring with AI trend prediction. With this, you can detect process faults much earlier than before and save even more costs.

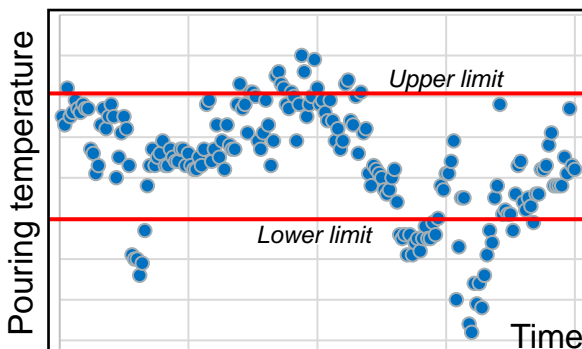
Trend prediction from RWP Analytics offers:

- ✓ Real time trend forecast for time-series data
 - Up- and down trend recognition
 - Short-, medium-, long-term trends
- ✓ Early fault notification and correction suggestions

Your benefits

- ✓ Earlier fault notification
- ✓ Faster process correction
- ✓ Robust improvement on process control and stabilization
- ✓ Lower rejection rate and costs

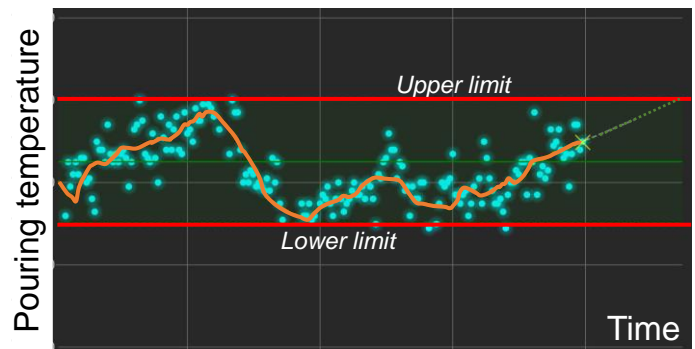
Without trend prediction



6% scrap rate



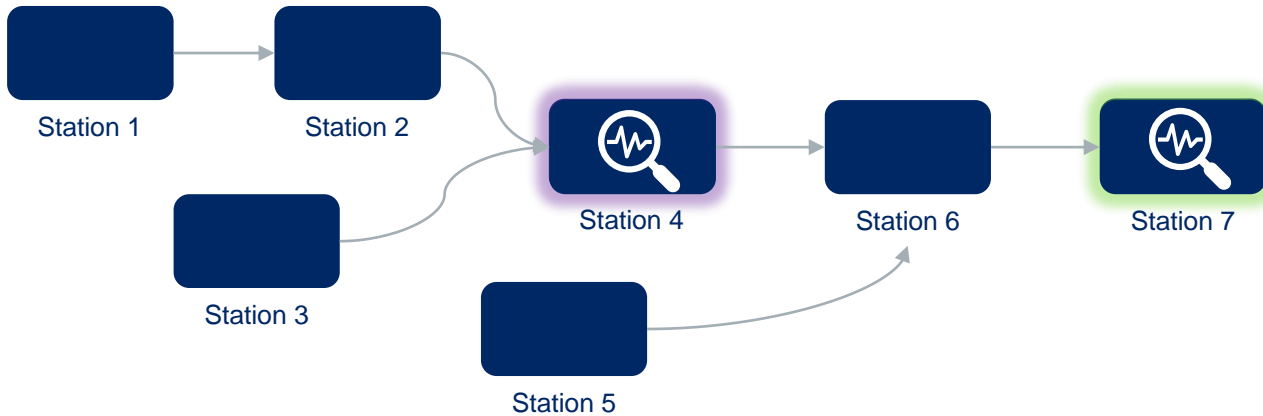
With trend prediction



2% scrap rate



Look back analysis & Control



Quickly identify critical process parameters and improve controllability

- ✓ Look back to all costs and inline technical data at anytime frame
- ✓ Determination of upper and lower process limits
- ✓ Parameter correction/optimization algorithm
 - Manual correction
 - Automatic correction
- ✓ Process evaluation
 - Technically
 - Economically

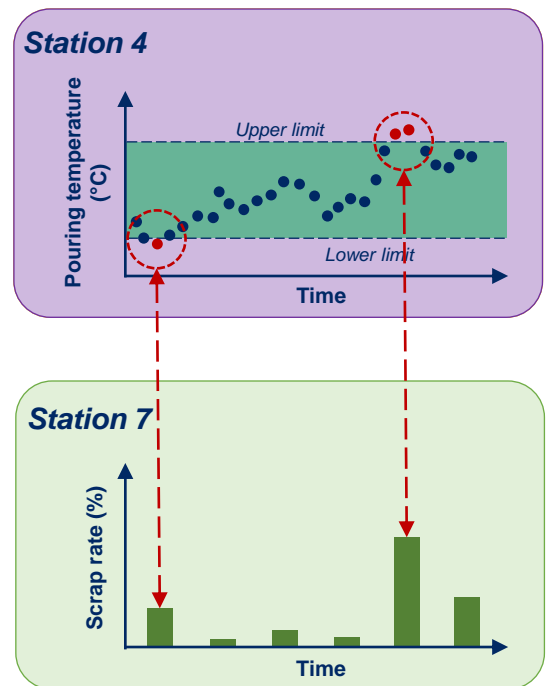
Your benefits

- ✓ Effective troubleshooting
- ✓ Optimal parameter target and limits and thus more consistent product quality
- ✓ Maximizing yield
- ✓ Decision support

We offer you consulting service for process analysis and control

RWP team is happy to help you gain the most from your existing data. We support you in:

- ✓ Process dependencies analysis
- ✓ Selection of machine learning methods
- ✓ Creation of data-based prediction model
- ✓ Parameter control strategy
- ✓ Onsite guidance for data-based process control





RWP ANALYTICS®

Contact your **ANALYTICS**
specialist!



RWP GmbH

Bundesstrasse 77, 52159 Roetgen, Germany



+49 2471 1230-17



analytics@rwp-group.de